

**CERTIFIED LAND CORNER RECORDATION**

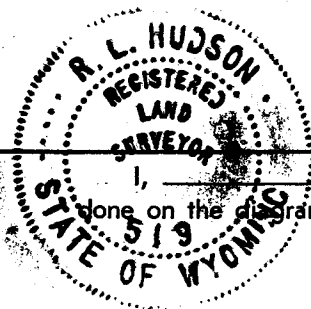
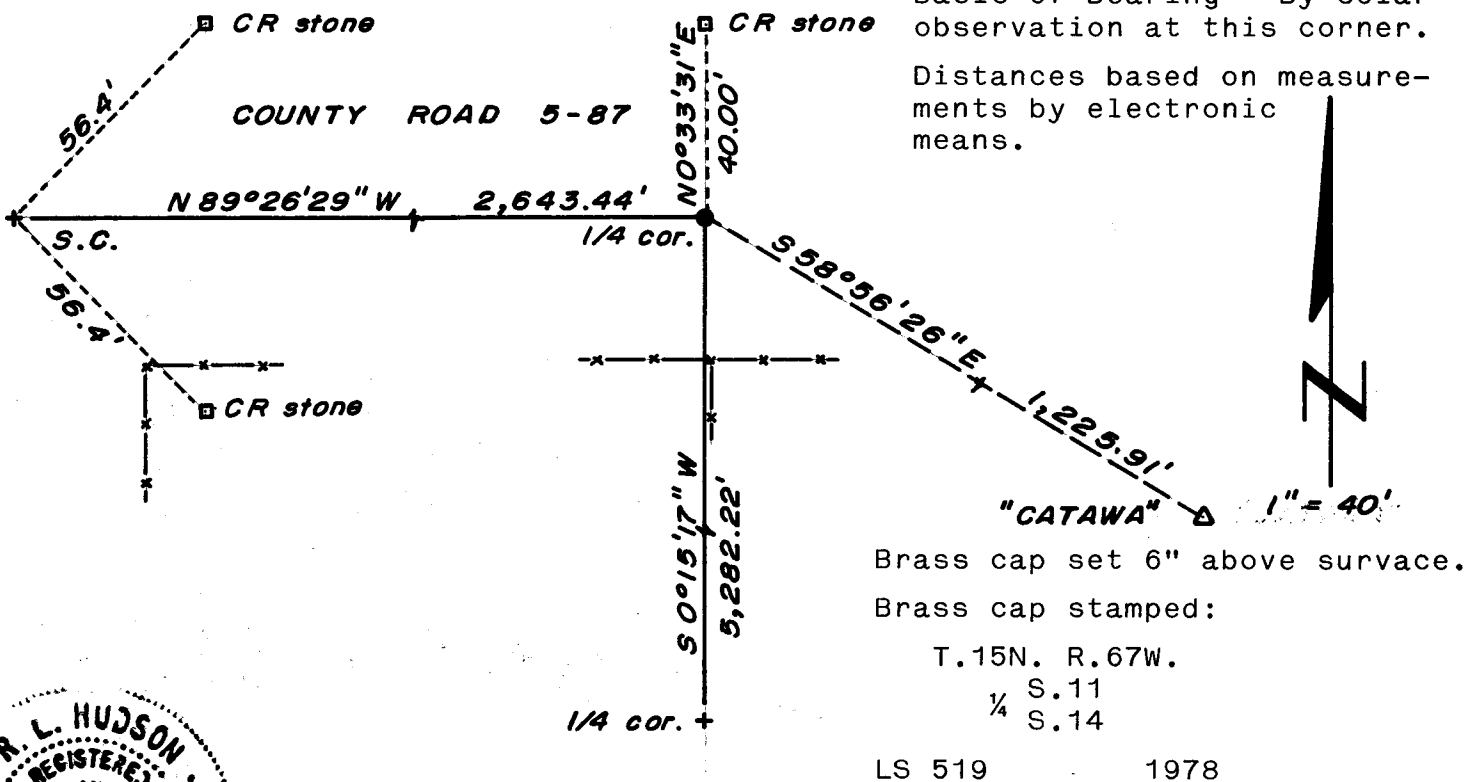
DESCRIPTION OF CORNER EVIDENCE FOUND, AND ORIGINAL RECORD (if known)

LOCATION Found 5" x 9" x 12" Granite stone with "1/4" 0.6' below surface;  
 1/4 S.11 from which a Granite stone with "WCCR" (set by Laramie County  
 1/4 S.14 Surveyor) bears N 0° 33' 31" E, 40.00 feet distant.  
 T.15N., R.67W. G.L.O. record - Unknown.  
 6th P.M.

DESCRIPTION OF MONUMENT AND ACCESSORIES ESTABLISHED  
 TO PERPETUATE THE ORIGINAL LOCATION OF THIS CORNER:

At the corner: Set 1 1/2" dia. x 30" long (concrete-filled) iron pipe with  
 brass cap.  
 Accessories: Left stone as memorial, 1' west of corner monument.  
 USGS BM "CATAWA", a concrete monument with brass tablet,  
 bears S 58° 56' 26" E, 1,225.91 feet distant.

SKETCH, WITH COURSE AND DISTANCE TO ADJACENT CORNER IF DETERMINED IN THIS SURVEY.  
 (May Sketch or Paste Reproduction on Reverse Side.)



I, R.L. Hudson certify that I have carefully performed or reviewed the work done on the diagrammed corner as reported on this recordation form and approve the same.

R.L. Hudson Wyoming L.S. No. 519  
 Signature of Surveyor Registration No.

STATE OF WYOMING,  
 Office of Clerk and Recorder,  
 County of Laramie

**496107**

This "corner record" was filed for record on the 18 day of August, 1978, was noted on the cross-index plat and is assigned page No. \_\_\_\_\_, in book No. \_\_\_\_\_.

James C. Mitchell  
 County Official

Cross Index No.	T. _____	R. _____	Mer. _____
	<u>J-19</u>	<u>15</u>	<u>67</u>
	T. _____	R. _____	Mer. _____
	T. _____	R. _____	Mer. _____
	T. _____	R. _____	Mer. _____
	T. _____	R. _____	Mer. _____
	T. _____	R. _____	Mer. _____